

**GHR-5N GRASSHOPPER** PV: 39

TP: **BM SZ: 3 TMM: 1 MV: 8"**  
 ROLE: **Skirmisher** SKILL: **4**

DAMAGE	S (+0)	M (+2)	L (+4)
	<b>3</b>	<b>4</b>	<b>1</b>

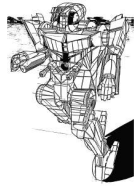
OV: **0** | HEAT SCALE **1 2 3 S**

A: ○○○○○○  
 S: ●●●●●●

SPECIAL: ENE

**CRITICAL HITS**  
 ENGINE ○+1 Heat/Firing Weapons  
 FIRE CONTROL ○○○○+2 To-Hit Each  
 MP ○○○○½ MV Each  
 WEAPONS ○○○○-1 Damage Each

ALPHA STRIKE STATS BATTLETECH



© 2014 The Topps Company. All rights reserved.

**GKD-5K2 QUICKDRAW** PV: 32

TP: **BM SZ: 3 TMM: 2 MV: 10"**  
 ROLE: **Skirmisher** SKILL: **4**

DAMAGE	S (+0)	M (+2)	L (+4)
	<b>3</b>	<b>3</b>	<b>0</b>

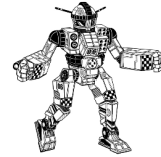
OV: **0** | HEAT SCALE **1 2 3 S**

A: ○○○○  
 S: ●●●●

SPECIAL: REAR1/1-

**CRITICAL HITS**  
 ENGINE ○+1 Heat/Firing Weapons  
 FIRE CONTROL ○○○○+2 To-Hit Each  
 MP ○○○○½ MV Each  
 WEAPONS ○○○○-1 Damage Each

ALPHA STRIKE STATS BATTLETECH



© 2014 The Topps Company. All rights reserved.

**ENF-4R ENFORCER** PV: 27

TP: **BM SZ: 2 TMM: 1 MV: 8"**  
 ROLE: **Skirmisher** SKILL: **4**

DAMAGE	S (+0)	M (+2)	L (+4)
	<b>3</b>	<b>2</b>	<b>0</b>

OV: **0** | HEAT SCALE **1 2 3 S**

A: ○○○○○  
 S: ●●●●

SPECIAL: AC1/1-

**CRITICAL HITS**  
 ENGINE ○+1 Heat/Firing Weapons  
 FIRE CONTROL ○○○○+2 To-Hit Each  
 MP ○○○○½ MV Each  
 WEAPONS ○○○○-1 Damage Each

ALPHA STRIKE STATS BATTLETECH



© 2014 The Topps Company. All rights reserved.

**CLNT-5U CLINT** PV: 27

TP: **BM SZ: 2 TMM: 2 MV: 12"**  
 ROLE: **Striker** SKILL: **4**

DAMAGE	S (+0)	M (+2)	L (+4)
	<b>2</b>	<b>2</b>	<b>1</b>

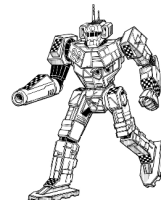
OV: **1** | HEAT SCALE **1 2 3 S**

A: ○○○○  
 S: ●●

SPECIAL: C3S, ENE, MHQ1, TAG

**CRITICAL HITS**  
 ENGINE ○+1 Heat/Firing Weapons  
 FIRE CONTROL ○○○○+2 To-Hit Each  
 MP ○○○○½ MV Each  
 WEAPONS ○○○○-1 Damage Each

ALPHA STRIKE STATS BATTLETECH



© 2014 The Topps Company. All rights reserved.